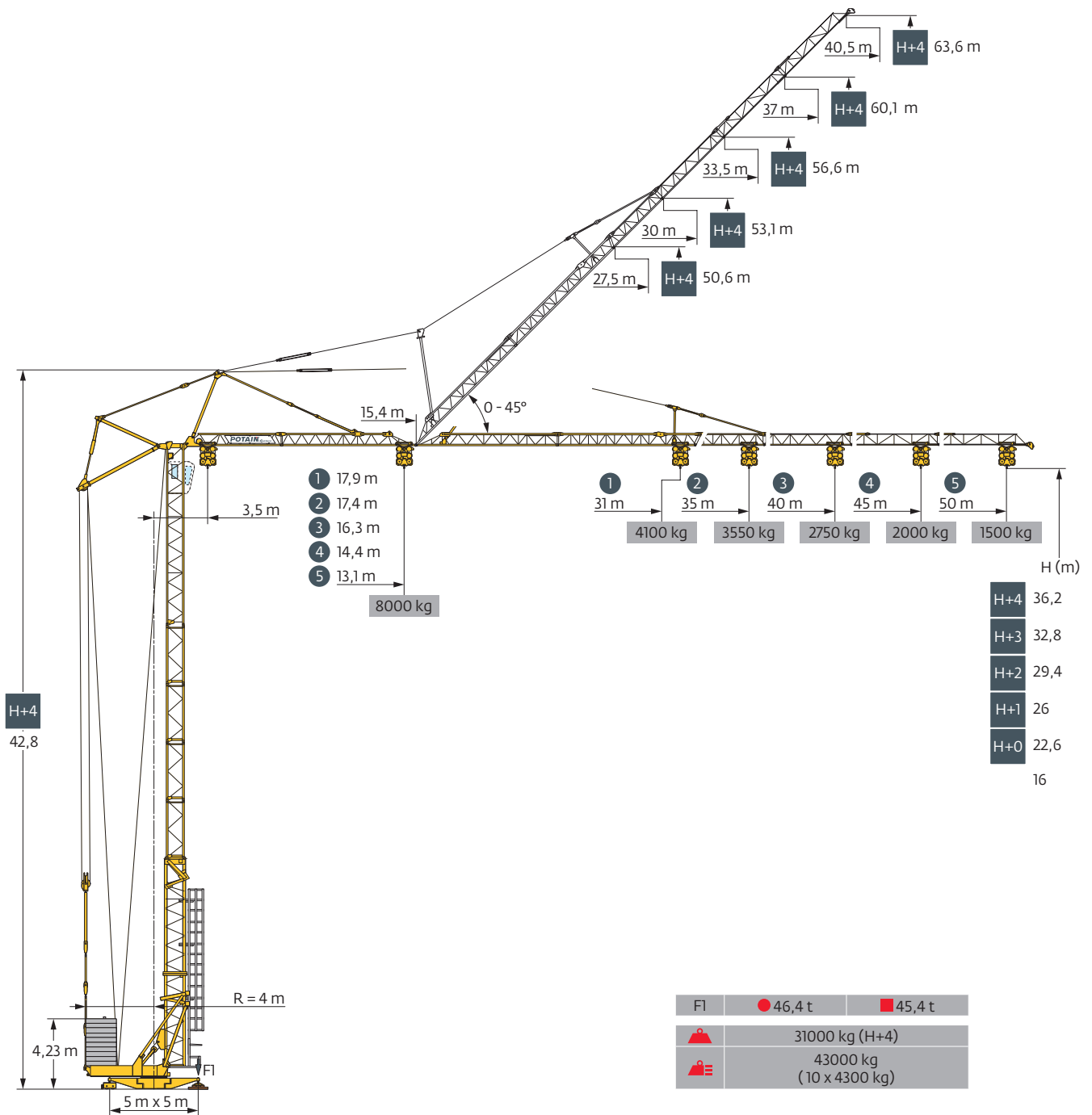
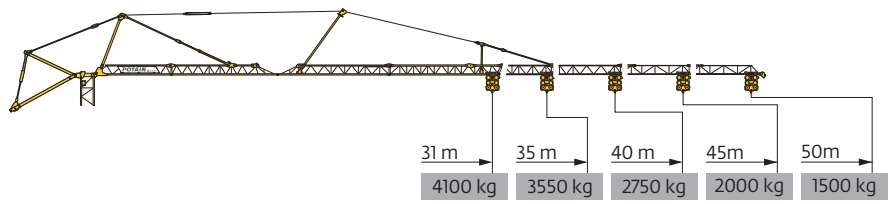


# Potain GTMR 386 B

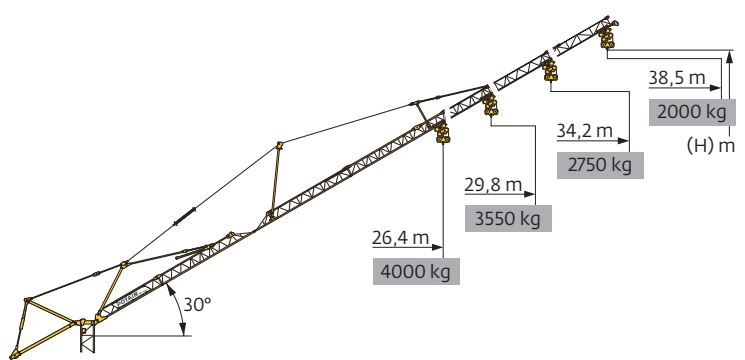


FI	● 46,4 t	■ 45,4 t
	31000 kg (H+4)	
	43000 kg (10 x 4300 kg)	

Courbes de charges / Lastkurven / Load curves / Curvas de cargas / Curve di carico  
 Curvas de carga / Кривые нагрузок



50 m	3,5	▶	13,1	15	17	20	22	23,2	25	27	30	32	35	37	40	42	45	47	50	m	
▲▲▲			8000	6710	5720	4655	4125	-	3500	3170	2765	2535	2250	2085	1870	1745	1580	1480	1350	kg	
									-	3500	3170	2765	2535	2250	2085	1870	1745	1580	1480	1350	kg
									4000	3650	3320	2915	2685	2400	2235	2020	1895	1730	1630	1500	kg
45 m	3,5	▶	14,4	15	17	20	22	25	25,8	27	30	32	35	37	40	42	45			m	
▲▲▲			8000	7610	6500	5310	4710	4010	-	3640	3180	2925	2600	2415	2175	2035	1850			kg	
										-	3640	3180	2925	2600	2415	2175	2035	1850		kg	
										4000	3790	3330	3075	2750	2565	2325	2185	2000		kg	
40 m	3,5	▶	16,2	17	20	22	25	27	29,4	30	32	35	37	40						m	
▲▲▲			8000	7580	6205	5515	4710	4280	-	3755	3460	3090	2875	2600						kg	
										-	3755	3460	3090	2875	2600					kg	
										4000	3905	3610	3240	3025	2750					kg	
35 m	3,5	▶	17,4	20	22	25	27	30	31,7	32	35									m	
▲▲▲			8000	6775	6030	5160	4695	4120	-	3805	3400									kg	
										-	3805	3400								kg	
										4000	3955	3550								kg	
31 m	3,5	▶	17,9	20	22	25	27	30	31											m	
▲▲▲			8000	7010	6240	5340	4860	4270	4100											kg	
									4000											kg	
									4000											kg	



45 m	3,5	▶	21,6	22,2	25	27	29	32	35	38,5	m
▲▲▲			4000	-	3305	2990	2725	2390	2115	1850	kg
			4000	3455	3140	2875	2540	2260	2000		kg
40 m	3,5	▶	24,4	25,2	27	29	32	34,2			m
▲▲▲			4000	-	3530	3225	2840	2600			kg
			4000	3680	3370	2990	2750				kg
35 m	3,5	▶	26,2	27	29,8						m
▲▲▲			4000	3855	3400						kg
			4000	3550							kg
31 m	3,5	▶	26,4								m
▲▲▲			4000								kg
			4000								kg

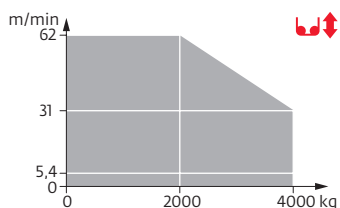
▲▲▲	45 m	40 m	35 m	31 m
H+2	49,4	46,9	44,4	42,4
H+1	46	43,5	41	39
H+0	42,6	40,1	37,6	35,6

Mécanismes / Triebwerke / Mechanisms / Mecanismos / Meccanismi  
 Mecanismos / Механизмы

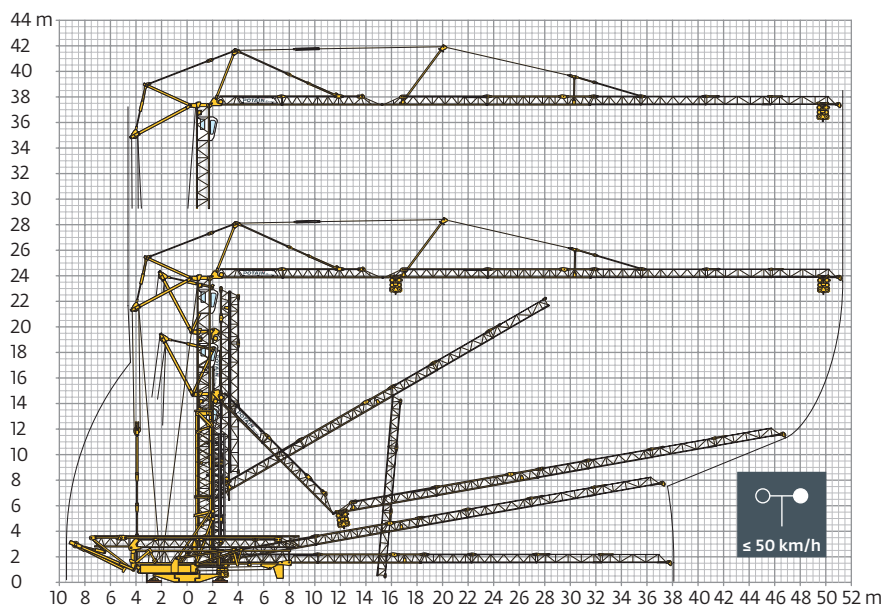
400 V - 50 Hz 480 V - 60 Hz								ch - PS hp	kW	
	33 PC 20	m/min	5,4	30	60	2,7	15	30	33	24
		kg	4000	4000	2000	8000	8000	4000		
	33 LVF 20	m/min	5,4	31	62	2,7	15,5	31	33	24
		kg	4000	4000	2000	8000	8000	4000		
	5 D3 V4	m/min	15 - 30 - 58						5,5	4
	RCV 62	tr/min U/min rpm	0 → 0,8						8	5,9
	TB 124	m/min	25						2 x 4	2 x 3

IEC 60204-32	kVA
400 V (+10% -10%) 50 Hz 480 V (+6% -10%) 60 Hz	50 kVA

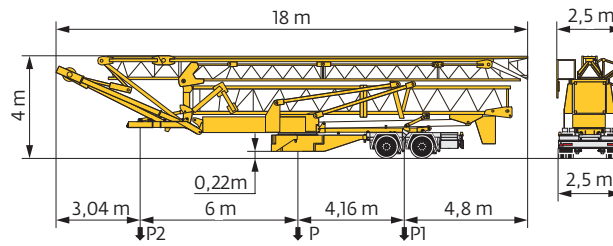
33 LVF 20



Montage / Montage / Erection / Montaje / Montaggio  
 Montagem / Монтаж



Transport / Transport / Transport / Transporte / Trasporto  
Transporte / Транспортировка



	km/h	P (kg)	P1 (kg)	P2 (kg)
S4/S215M	25	32950	21000	11950
S5B/J215M	80	33250	20900	12350

**FR**

**DE**

**EN**

**ES**

**IT**

**PT**

**RU**

<b>R</b>	Rayon de giration	Schwenk radius	Rear slewing radius	Radio de giro	Raggio di rotazione	Raio de rotação	Задний габарит
●	Réactions en service	Reaktionskräfte in Betrieb	Reactions in service	Reacciones en servicio	Reazioni in servizio	Reacções em serviço	Реакция при работе
■	Réactions hors service	Reaktionskräfte außer Betrieb	Reactions out of service	Reacciones fuera de servicio	Reazioni fuori servizio	Reacções fora de serviço	Реакция в покое
⚖	Poids à vide, sans lest, sans trains de transport, avec flèche maxi. et hauteur standard.	Gewicht ohne Last, ohne Ballast, ohne Transportachsen, mit max. Auslager und Standardhöhe	Weight without load, without ballast, without transport axes, with max. jib and standard height	Peso en vacío, sin lastre, sin trenes de transporte con flecha y altura estándar	Peso a vuoto, senza zavorra, senza assali di trasporto, con braccio max e altezza standard.	Peso em vazio, sem lastro, sem eixos de transporte com lança máxima e altura standard.	Вес без груза, без балласта, без осей для транспортировки, с максимальным вылетом стрелы и стандартной высотой
⚖	Poids total du lest	Ballast-Gesamtgewicht	Total ballast weight	Peso total del lastre	Peso totale della zavorra	Peso total do lastro	Общий вес балласта
⬆	Levage	Heben	Hoisting	Elevación	Sollevamento	Elevação	Подъем
⬆	Distribution	Katzfahren	Trolleying	Distribución	Distribuzione	Distribuição	Перемещение по стреле
⬆	Orientation	Schwenken	Slewing	Orientación	Rotazione	Rotação	Поворот
⬆	Translation	Kranfahren	Travelling	Traslación	Traslazione	Translação	Перемещение крана
⚡	Puissance nominale	Nennleistung	Rated power	Potencia nominal	Potenza nominale	Potência nominal	Номинальная мощность

⚠	Document commercial non contractuel. Pour toute information technique se référer à la notice correspondante.	Unverbindliches Vertriebsdokument. Für technische Informationen, siehe die entsprechenden Anweisungen.	This commercial document is not legally binding. For any technical information, please refer to the corresponding instructions.	Documento commercial no contractual. Para cualquier información técnica, ver la noticia correspondiente.	Documento commerciale non vincolante, per tutte le informazioni tecniche fare riferimento al catalogo istruzioni.	Documento comercial não contractual. Para qualquer informação técnica complementar consultar as respectivas instruções.	Этот коммерческий документ не является юридически обязательным. Для получения технической информации, см. соответствующие инструкции.
---	--	--	---	--	---	---	---



**Manitowoc - Americas**  
**Manitowoc, Wisconsin, USA**  
Tel: +1 920 684 6621  
Fax: +1 920 683 6277

**Shady Grove, Pennsylvania, USA**  
Tel: +1 717 597 8121  
Fax: +1 717 597 4062

**Manitowoc - Europe, Middle East & Africa**  
**Ecully, France**  
Tel: +33 (0)4 72 18 20 20  
Fax: +33 (0)4 72 18 20 00

**Manitowoc - Asia & Pacific**  
**Shanghai, China**  
Tel: +86 21 6457 0066  
Fax: +86 21 6457 4955

Ref: GTMR.386 B 2003 48 - 8

www.manitowoc.com